

# What to look for in Winter

## ***Butterflies and moths:***

Comma, Red Admiral, Small Copper, Angleshades, Vapourer

## ***Dragonflies:***

Common Darter, Southern Hawker, Migrant Hawker

## ***Other insects:***

Hawthorn Shieldbug, Kidney-spot Ladybird, Common Wasp

## ***Spiders:***

Garden Cross Spider, *Araneus quadratus*, Harvestman

## ***Flowers:***

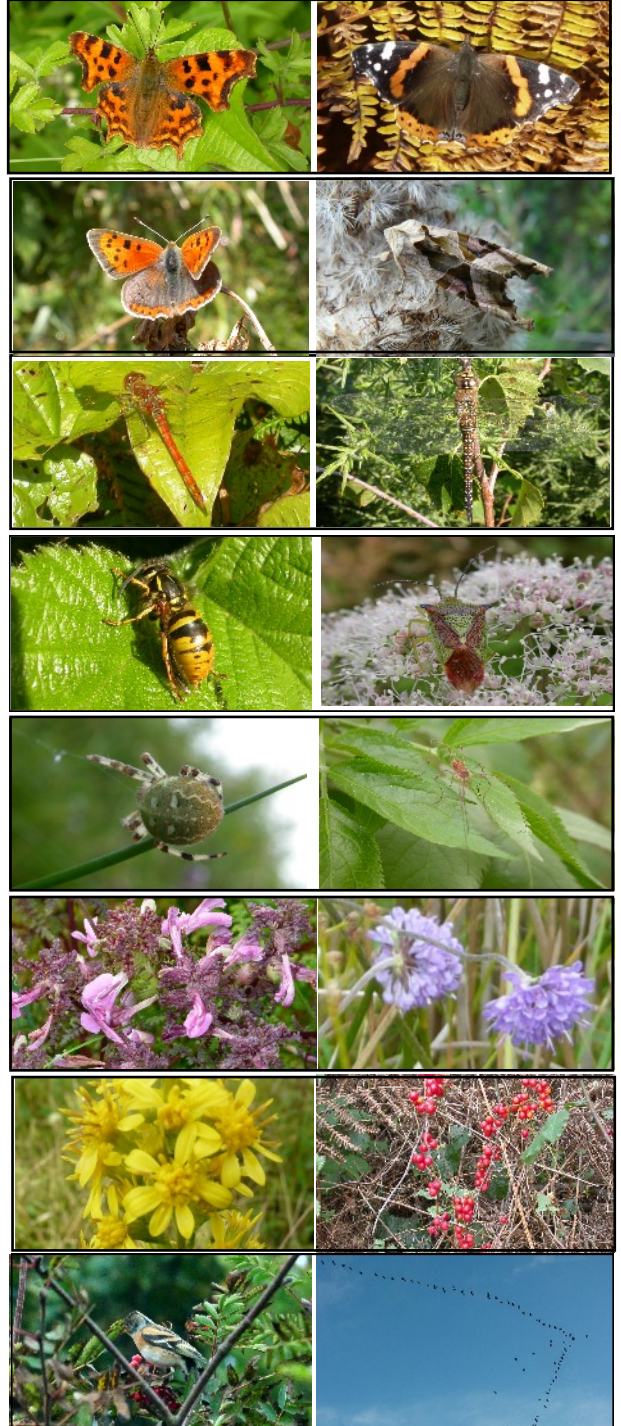
Marsh Lousewort, Eyebright, Grass of Parnassus, Devil's-bit Scabious, English Golden-rod, Black Bryony (berries), Blushing Bracket, Sulphur-tuft

## ***Birds:***

Moorhen, Pheasant, Bullfinch, Jay, Long-tailed Tit, Pink-footed Geese (overflying), Brambling, Kingfisher

## ***Mammals:***

Grey Squirrel, Muntjac, Fox, Rabbit



Top left to bottom right:

Comma, Red Admiral, Small Copper, Angleshades, Common Darter, Migrant Hawker, Common Wasp, Hawthorn Shieldbug, Spider *Araneus quadratus*, Harvestman, Marsh Lousewort, Devil's-bit Scabious, English Goldenrod, Black Bryony (berries), Brambling, Pink-footed Geese (overflying).